

User Manual

(Multi-language LED moving sign)



<p>Note: MAR 28. 2011</p>

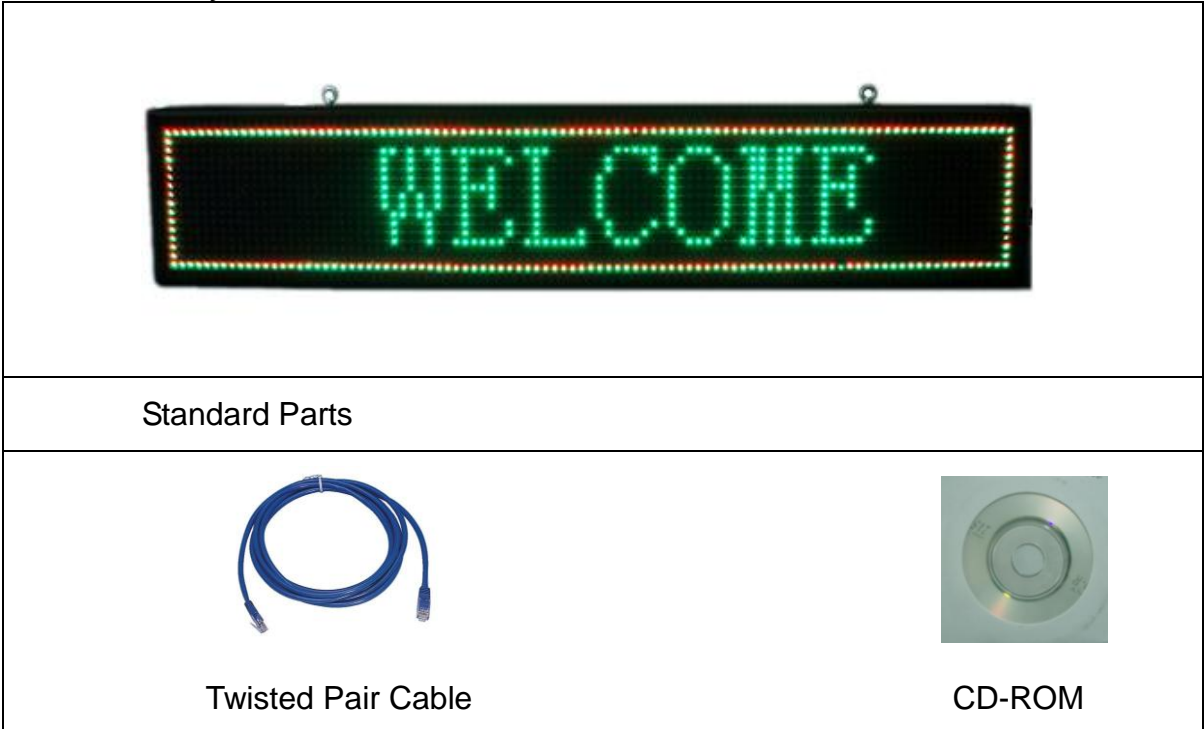
<p>This manual is applied to the model of 16,32,48 series Note: Specifications are subject to change without notice</p>
--

USER MANUAL	1
(MULTI-LANGUAGE LED MOVING SIGN).....	1

1. SUMMARY.....	1
1.1. ACCESSORY	1
1.2. FEATURES.....	1
2. INSTALL THE MOVING SIGN.....	1
2.1. SWITCH ON/OFF YOUR SIGN	1
2.2. HOW TO USE YOUR SIGN?	2
3. SOFTWARE INSTALLATION	2
3.1. TURN ON THE PANEL	2
3.2. PC CONNECT TO PANEL	5
3.3. SOFTWARE PREVIEW	5
4. HOW TO EDIT A LED PROJECT?	8

1. Summary

1.1. Accessory



NOTE: The picture is only for reference, please make the object as the standard .

1.2. Features

- 1) Display language: Multi-language.
- 2) LED sign memory: 2 M.
- 3) Support bmp、 jpeg、 gif picture format and support gif animation play.
- 4) Support manual and timing to adjust brightness.
- 5) Support manual/automatic powered on and off.
- 6) Build-in real time clock.
- 7) Can extend temperature and hygrometer display (need extra charge)
- 8) Computer operation request: windows-xp/vista/windows 7.

2. Install the moving sign

Your sign can be mounted to a wall or hang.

Note:

- 1) Do not mount or attach the power supply to anything
- 2) Do not let the power supply hang loose.
- 3) Place the power supply on a flat surface where no chemicals or liquid, such as water, will contact it.
- 4) Plug the power supply into an easily accessible electrical outlet Wall mount

2.1. Switch On/Off your sign

Firstly, make sure the sign install correctly, turn on the switch, the message will run

automatically.

2.2. How to use your sign?

It used widely in public house, windows, shopping, In front of the Supermarket and so on.

Connect diagram :

- 1) Computer—R outer—LED panel

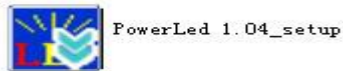


- 2) Computer—LED panel (need to modify IP: 192.168.1.x (x between 1 and 256))

3. Software installation

3.1. Turn on the Panel

Open the CD-ROM, and click the file:

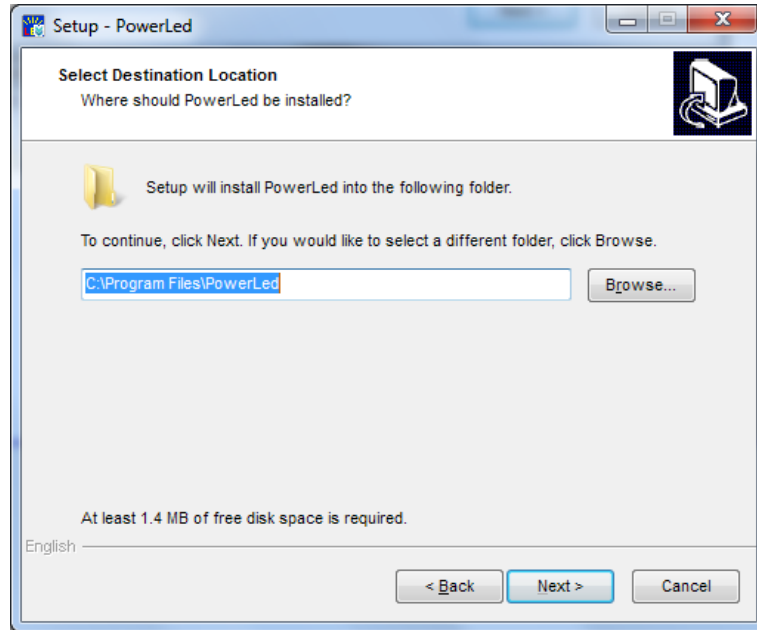


(The software is upgraded, it will be some difference from the old version, but the function and usage is same as before.)

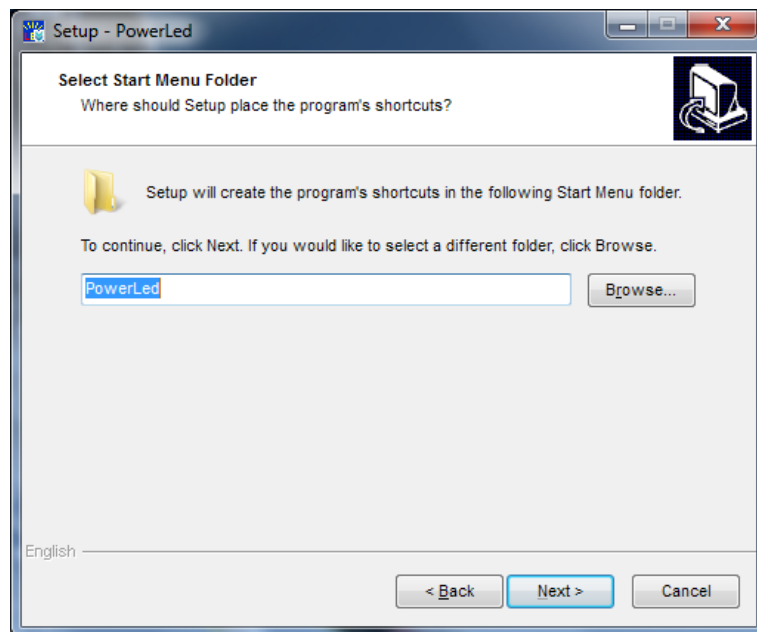
Choose the language: ENGLISH.



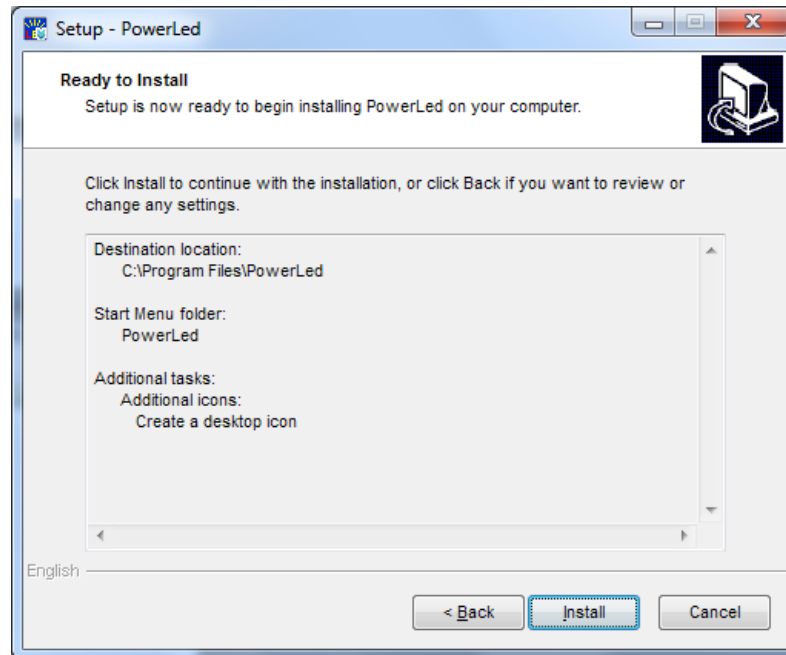
Then click on "Next":



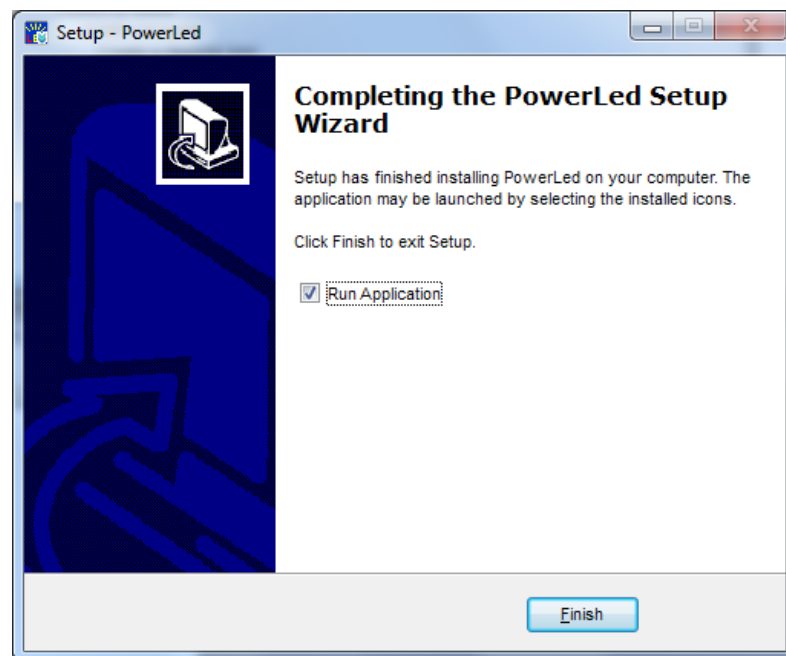
Then click on "Next":



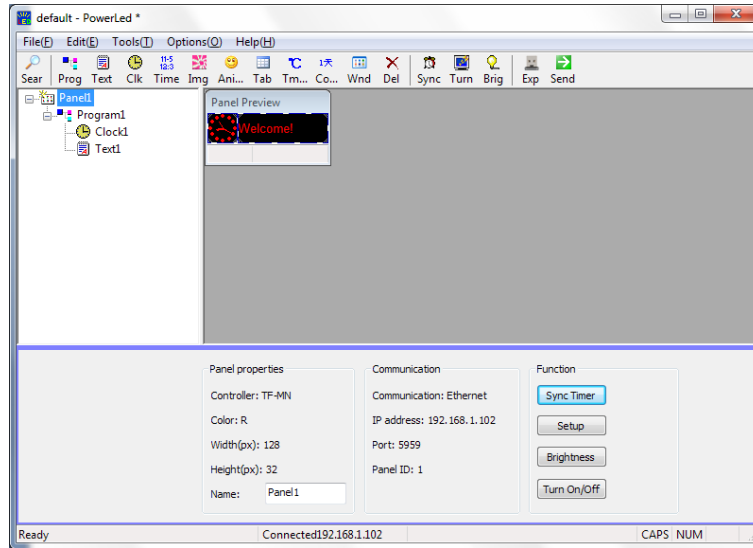
Then click on "Next":



Then click on “Next”:

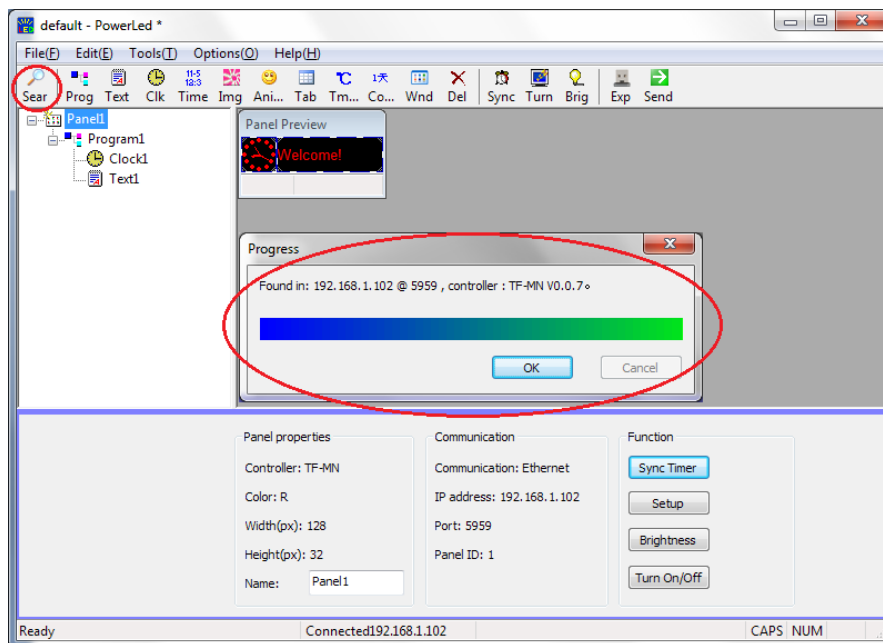


Click “Next” to enter into main screen as follows:



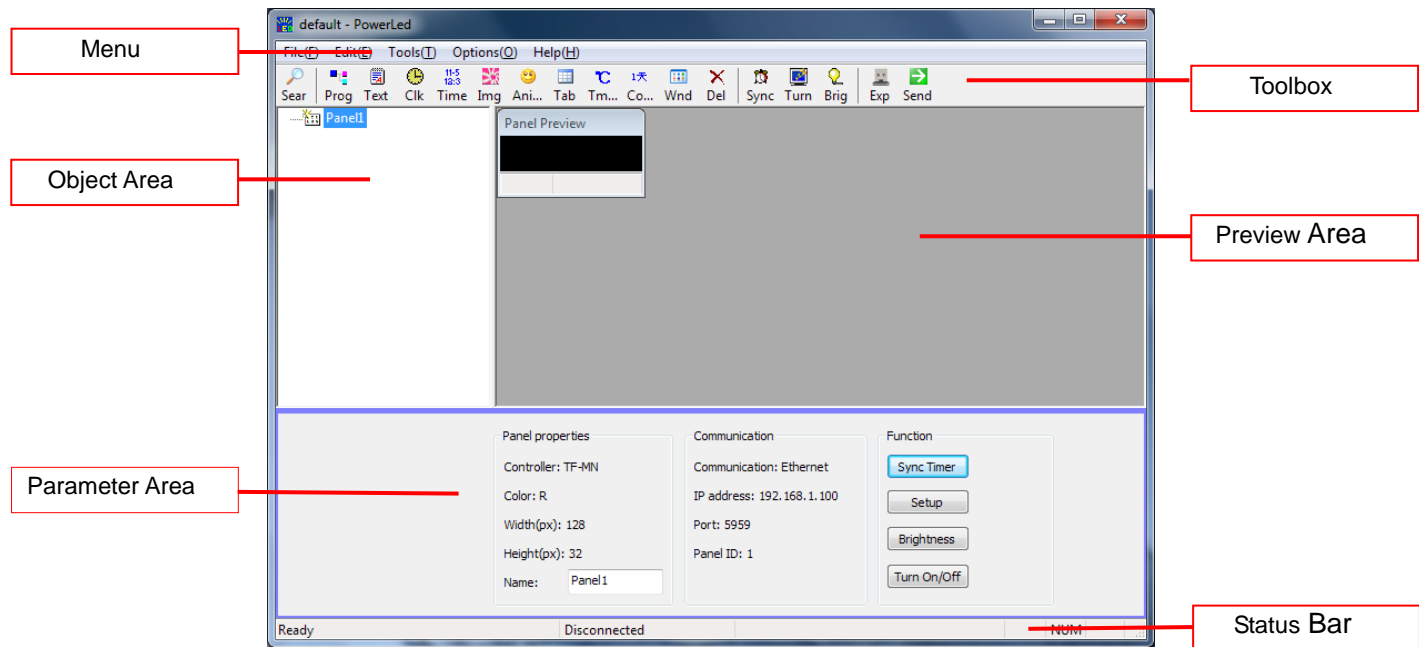
3.2. PC connect to panel

- 1) When power on, the display will get an IP address automatically, if it is connected with router, then you can use the software to find panel.
- 2) If panel can't get an IP within 10 seconds after power on (e.g. generally it can't get IP when connected directly with PC), then panel will set IP as "192.168.1.252" automatically. If the IP of PC is "191.168.1.x", it can be find automatically. If not, please reset the IP of PC, then using the software to find the display.
- 3) Click the button "Sear" and get the display parameters. As shown below



3.3. Software preview

The main interface as below:



The menu contains [File],[Edit],[Tools],[Options],[Help]

[File] menu

[File] menu as bellows:

[New]-----new a led project which file extension is *.ledprj

[Open]-----open existing led project and load into the current system

[Save]-----save led project

[Save as]----- Save the current setup to a new led project

[Export to USB Disk (*.tfu)...]-----save the current file to USB Disk

[Exit]-----close the current led project and exit the system

[Edit] menu

[Edit] menu as bellows:

[Undo]-----undo your last action

[Cut]-----Cut current object

[Copy]-----Copy current object

[Paste]-----Paste current object

[Delete Current Object]-----delete current object

[Add Program]-----add a new program

[Add Window]-----add a new window in current program

[Add RTF]-----add a new Text in current program

[Add Image]-----add a new image in current program

[Add Clock]-----add a new clock in current program

[Add Date time]-----add a new date & time in current program

[Add Animate]-----add a new animate in current program

[Add Temperature]-----add a new temperature in current program

[Add Countdown]-----add a new countdown in current program

[Add Table]-----add a new table in current program

[Tools] menu

[Tools] menu as bellows:

[Search Panel]-----search panels in current network

[Panel Setup...]-----set up panel parameters

[Advanced Setup...]-----set up in advance

[Sync Timer]-----Sync timer with the computer

[Adjust Brightness...]-----adjust panel brightness

[Set Panel On/Off...]-----set panel On/Off

[Send All To Panel]-----send current led project to panel

Communication Setup...] ----- set up communication parameters

[Panel Parameter Reset]-----reset panel parameter to default parameters

[Firmware Update...]----- update the firmware

[Clear Panel]-----clear the panel display

[Options] menu

[Options] menu as bellows:

[Language (L)]-----change display language

[Options...]-----setup dialog and tip

[Toolbar (T)]-----display Toolbar bellow the menu

[Status (S)]-----display Status bar in the bottom of main window of the software

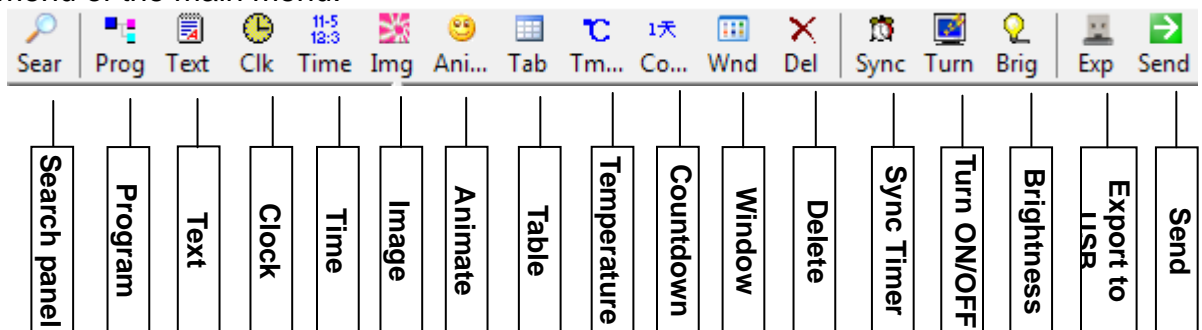
[Help] menu

[Help] menu as bellows

[About Power Led]-----show software version and copyright

The Toolbar

Toolbar is the most direct-viewing and effective operating mode in the common menu of the main menu.



The Object Area

In Object Area there are some objects be added, left-click onto the object you can choose it with special parameter display in parameter area; right-click onto the object you can choose item to add a new object or delete, move up, move down current object

The Preview Area

In Preview Area you can preview panel display and also can adjust the display area of object.

The Parameter Area

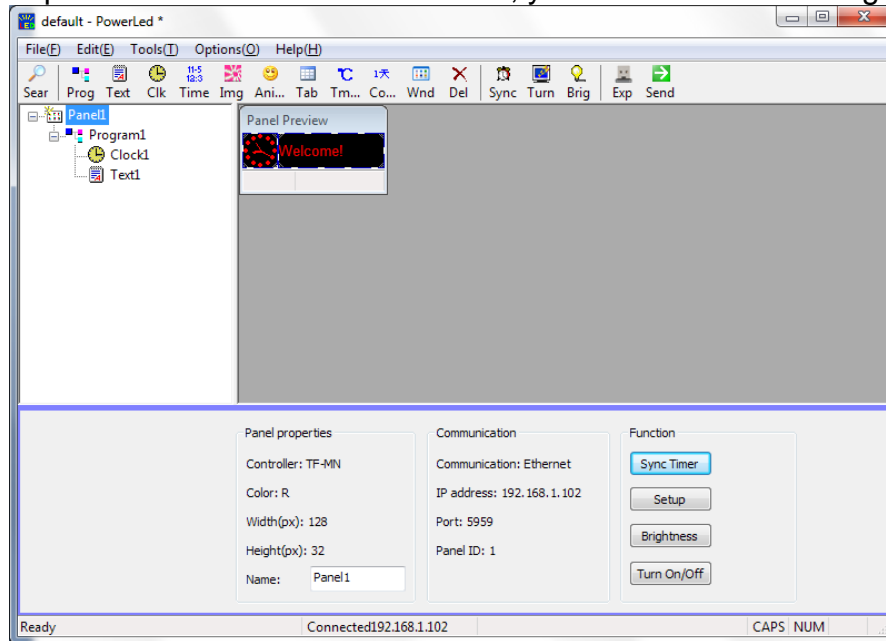
In Parameter Area you can set up each object parameters.

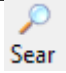
The Status Bar

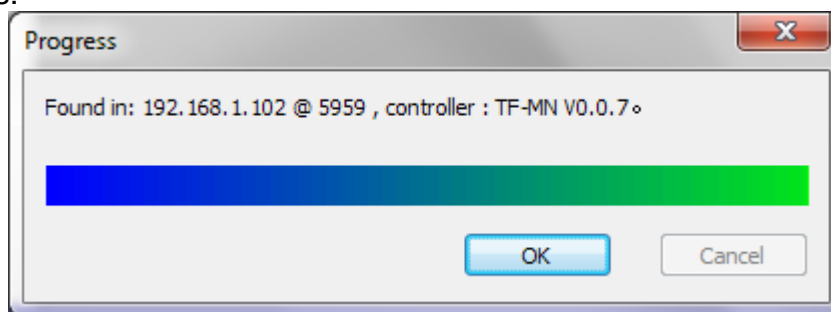
In Status Bar you can read the status of the status of software, network and so on.

4. How to edit a led project?

When you open the software for the first time, you will see the following interface:



Firstly you need to search the LED panel by clicking  on toolbar and you will see as follows:

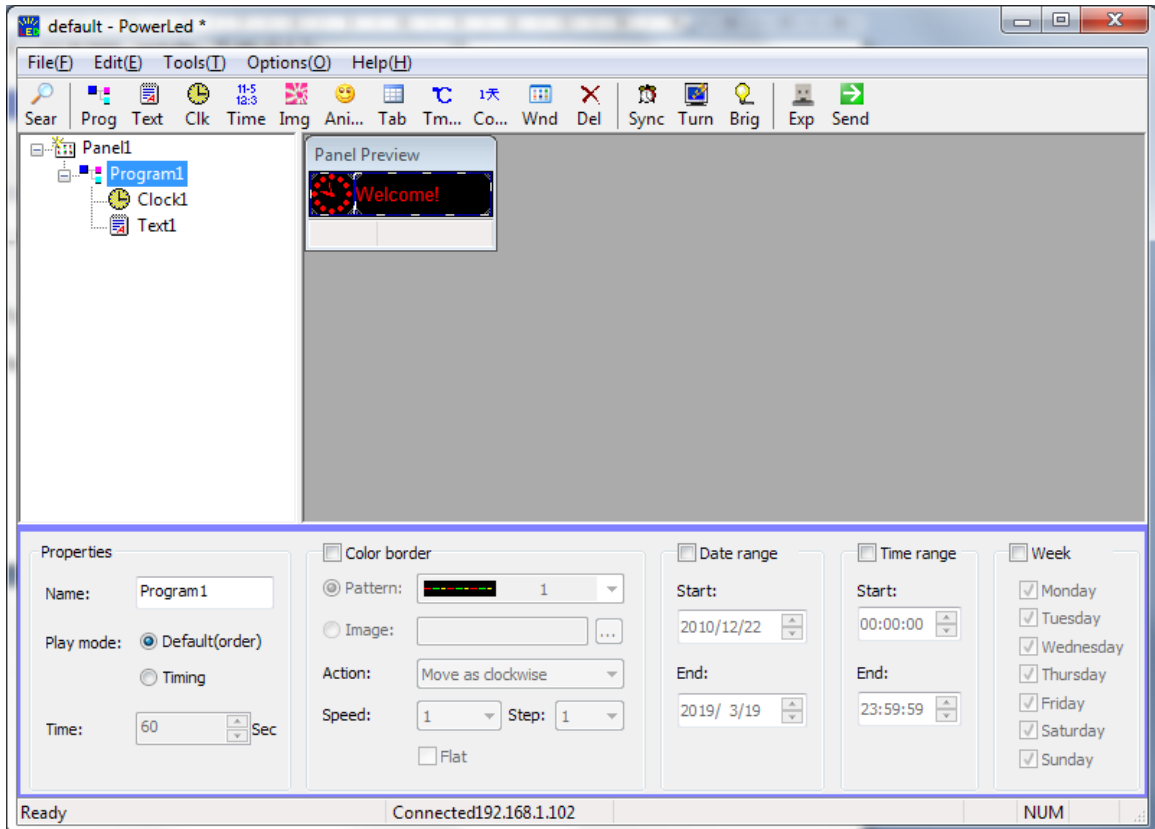


Then click “OK” icon. If not, please check whether the hardware connection is in normal condition.

Now you can edit your program. For example, we edit program basing on default program1.

For example, we want the display to show the message “Happy birthday!” from right to left; display time from Monday to Friday, 9:00 AM—5:00 PM; with a clock showing in the right of display area.

You can modify the properties in properties area once you selected program 1. As follows shown:

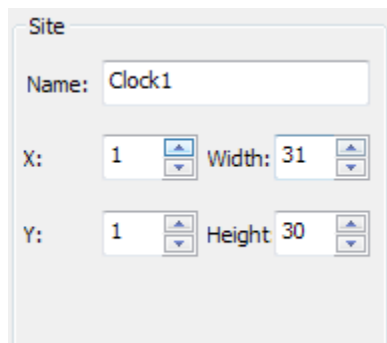


In the above properties area you can modify program name, play mode, color border, date range, time range, week. In order to display what we wanted.

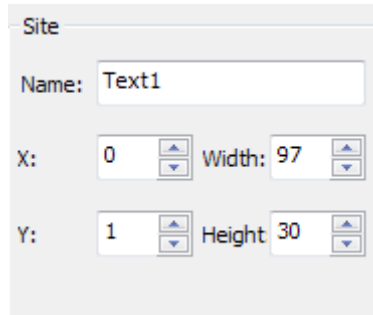
Adjust display time range: select "Time range" then set up the start: 09:00:00, End: 17:00:00;

Adjust display program From Monday to Friday: select "Week" then select "Monday, Tuesday, Wednesday, Thursday, Friday".

Adjust clock display area(or drag the item area in the preview area). Select Clock1, shown as below:



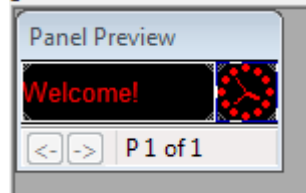
We want the clock display in the right, so we change the $x=128-31=97$, but the text area is covered by the Clock1, we need to adjust the text area to the left. Select Text1, modify the location as below:



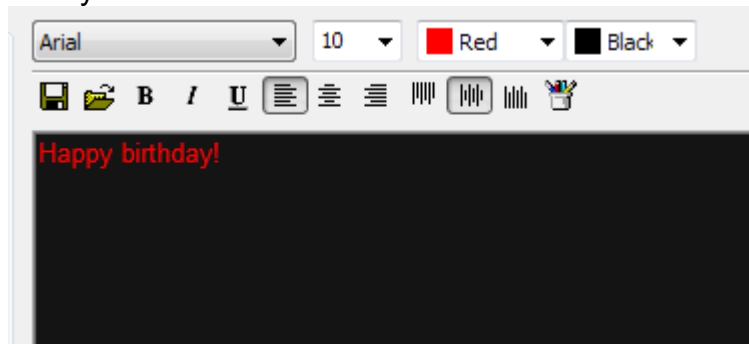
Site configuration dialog box showing the following fields:

- Name: Text1
- X: 0, Width: 97
- Y: 1, Height: 30

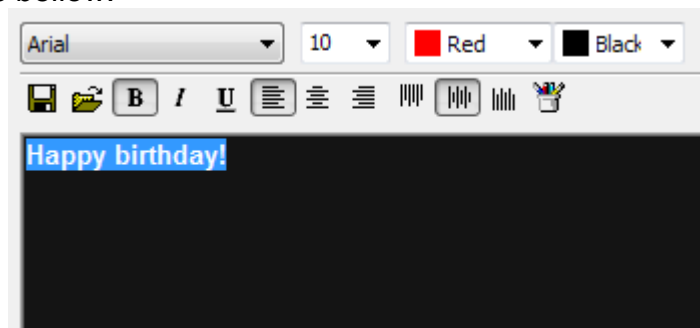
Then you can see the preview area as bellows:



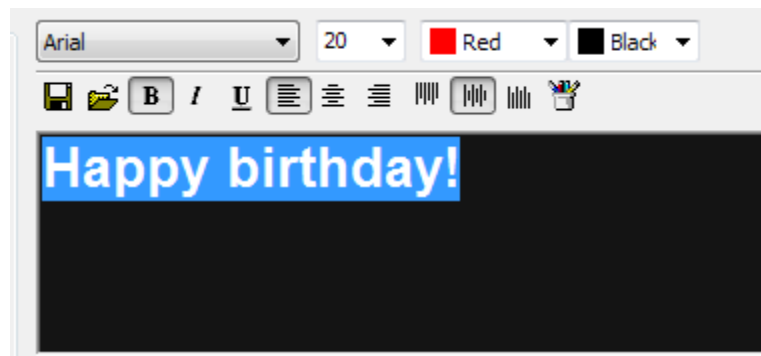
Then modify the message,
Input "Happy birthday!" in the textbox as bellow:



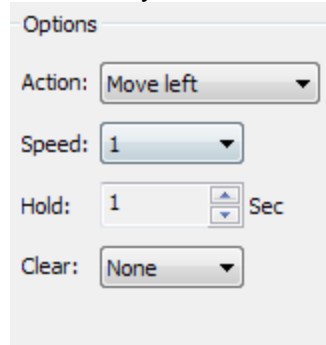
The Font is too small we need to adjust it. Select the message then Change the font to 20, you will see as bellow:




Then



You will see the display can only display Happy at a time so we need to let the message moving from right to left. So modify action: move left



Finally an easy program is finished. If the communication is correct, then you can left-click onto  Send ([Tools]→[Send All To Panel]), and the panel will restart then display the program.

-----Thank you for using our products! -----